

Ellen Friar— Script

[Crazy opening statement straight from interrogation]

"I'm not demanding, I'm asking nicely.

As a kind civilian— that also knows how to manipulate the cops."

[Freeze frame, arrow

Pause w/Identifying marker (arrow) with on-screen text or voiceover identifying the suspect]

"This is Russell Jones. He's been accused of helping Ellen Rose Friar and Gavin Curtis McFarlane kill Aaron Friar— Ellen's father.

50-year-old Aaron was the victim of a brutal crime. According to neighbors, the doting father of 3 was killed over a dispute revolving around his underage daughter's relationship with 19 -year-old McFarlane. His untimely demise was only the beginning of this dark tale.

Continuation of shocking interrogation statement

"We can do this the easy way, or we can do this the hard way, and I can release my bipolar... let's make a deal."

Fade to Black/or background image w/Date & Time of Incident - on-screen text RED

October 2, 2017. 6:42 AM.

Quick Back story (image of the suspect, actual or stock images, CCTV footage, b-roll stock footage)

Let's set the stage and take you back to that fateful night of October 2, 2017. Seventeen-year-old Ellen Rose Friar found herself entangled in a web of darkness as she conspired with her 19-year-old boyfriend to commit an unthinkable act.

Ellen's own father, Aaron Friar, fell victim to a crime that no one could have foreseen. As he peacefully slept on the couch, his life was brutally ended by an attack with a baseball bat. It's a chilling reminder that evil can lurk even within our closest circles.

This heinous crime was met with shock and disbelief within the community. Law enforcement immediately launched an investigation to unravel the twisted motivations behind the murder.

With each passing day, detectives meticulously pieced together the fragments of evidence, scrutinized witness testimonies, and combed through the shadows to bring justice to the grieving family and the shattered community.

Lead into Title of Video (ex: this is what happens when...)

When The Suspect Is Both The Detective & The Criminal

More back story on the suspect (voiceover with actual interrogation footage & stock video in the background)

Ellen, at the time of the crime, was a 17-year-old high school student. She had a tumultuous relationship with her father, Aaron Friar, due to his disapproval of her relationship with Gavin Macfarlane. Ellen may have felt trapped between her desire for independence and her father's strict rules. She had repeatedly rebelled against her father's authority until the tension in their relationship escalated to a tragic breaking point.

Gavin Macfarlane, then 19 years old, was in a romantic relationship with Ellen. Described as charismatic and charming, he exerted a significant influence over Ellen. Gavin may have manipulated Ellen's emotions and vulnerabilities to fuel a sense of rebellion against her father's wishes. His involvement in the crime suggests a disregard for the consequences of his actions and a willingness to cross boundaries to maintain control.

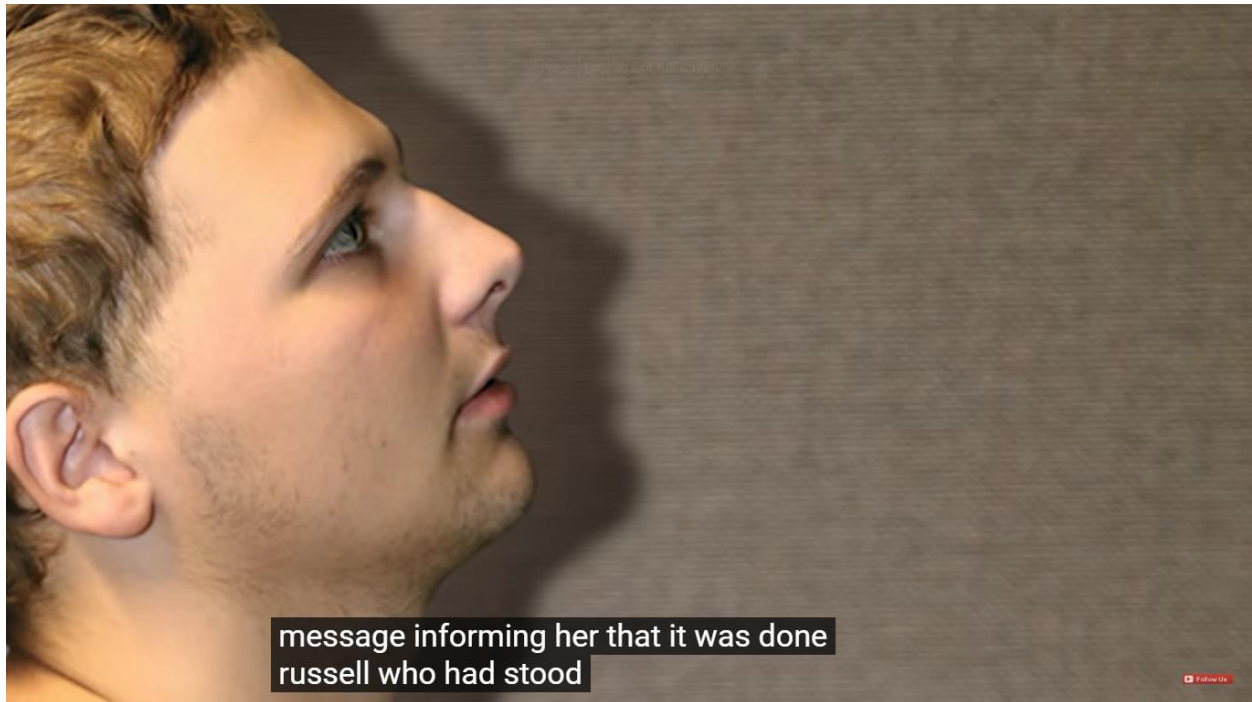
Russell Jones was a close friend of Gavin and acquainted with Ellen. His involvement in the crime suggests a potential role as an accomplice. It is essential to explore the dynamics of his relationship with Gavin and Ellen to understand the motives behind his participation. Russell's motives could range from loyalty to Gavin to personal grievances against Aaron Friar, although further investigation is necessary to establish a clearer picture.

Explanation of what happens next

The air was thick with tension inside the solemn courtroom as the trial of Ellen Rose Friar, Gavin Macfarlane, and Russell Jones commenced. The prosecution presented a meticulously crafted case, revealing the disturbing details of the conspiracy to murder Aaron Friar, Ellen's father. Witnesses took the stand, recounting the chilling events unfolding that fateful night.

On the other hand, the defense sought to paint a picture of misguided youth, emphasizing the defendants' young ages and claiming that external influences played a significant role. The jury listened attentively, grappling with the weight of their decision. As the trial reached its culmination, the haunting reality of the crime was laid bare, and the fate of the accused now rested in the hands of justice.

Interrogation Footage



They didn't just stop at taking his life; they had a macabre plan for covering their tracks. They decided to dump Aaron's lifeless body off an embankment right alongside a road. Can you believe it? They tossed various pieces of incriminating evidence, like trash and clothing articles, over that same embankment.

They even ditched Aaron's car and walked away. Their grand scheme involved hiding out in an abandoned house for a while, lying low, and eventually making their escape to sunny California. But here's the twist: it was a pretty well-known road, and wouldn't you know it, some lady happened to be out walking her dog and stumbled upon Aaron's lifeless body. Talk about a shocking discovery!

Long Interrogation Footage (about 1 minute)

Explanation of what was said & what is happening w/video footage - Strategy (40-45 seconds)



Aaron's brutal murder marked the beginning of the end for Ellen Friar. As she sits rigidly in an uncomfortable, uncushioned chair, the stark walls close in on her. The room's cold design, deliberately intended to evoke discomfort, isolation, and unfamiliarity, sets the stage for the impending interrogations that lie ahead. The relentless questioning has already commenced, pushing Ellen further into the depths of her own harrowing tale.

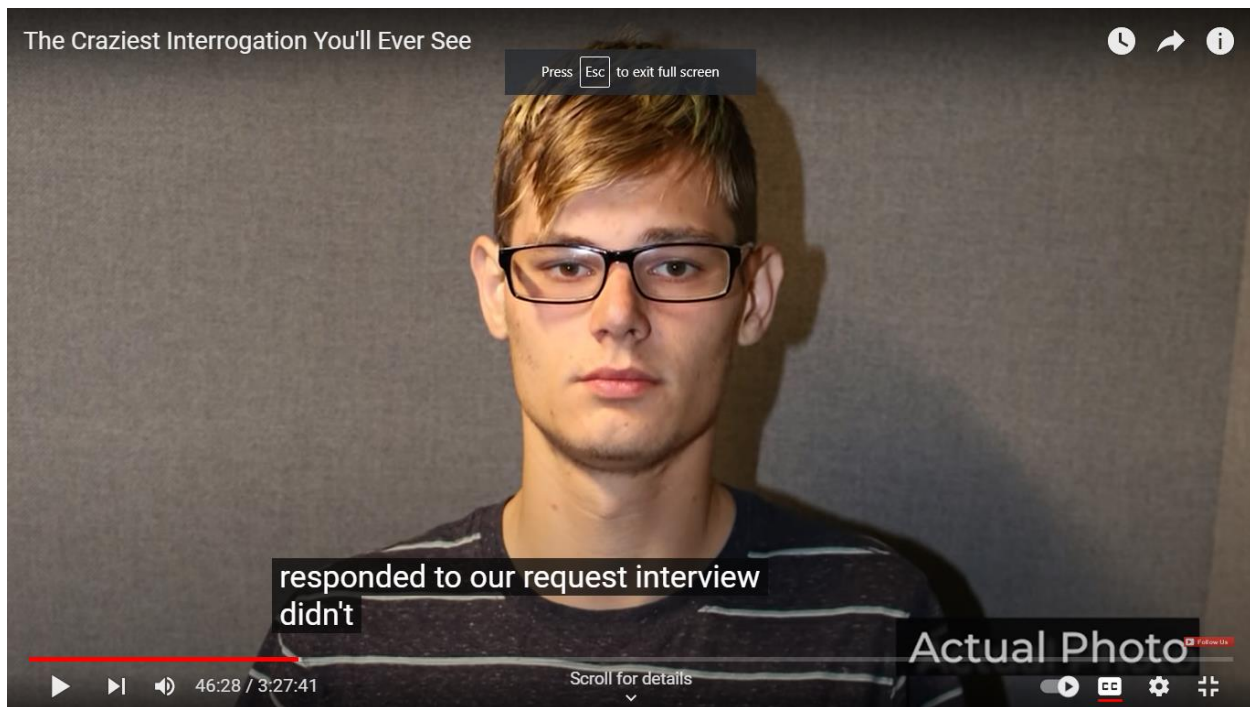
Soon, she's introduced to a psychologist trainee. The investigative team carefully chose Detective Stephanie Smith to conduct Ellen's interrogation for strategic reasons. Police psychology experts have found that investigators who share certain traits with the suspects are more likely to establish rapport and facilitate open, honest communication.

This principle extends to the broader field of psychology and can be utilized to manipulate and appear more likable, known as the liking-similarity effect. Considering this, Ellen is likelier to respond positively to a soft-spoken female detective than to a harsh, gruff male. However, right from the beginning, Ellen displays a strong resistance to the interrogation. Detective Smith is prepared to navigate each obstacle thrown her way in order to establish a line of communication with Ellen.

In the next room is MacFarlane's interrogation.

Interrogation Footage (about 1.5 minutes)

Explanation of what was said & what is happening w/video footage - Strategy (40-45 seconds)



The interrogation occurred less than a day after Gavin bludgeoned Aaron to death. As he sat in the interrogation room, Gavin casually asked, "How's your morning been so far? Busy?" This lighthearted, almost mechanical, question created a stark contrast. It was the first behavioral observation of Gavin, revealing his lack of remorse. Similar to Ellen, Gavin appeared unfazed by the gravity of his past actions and the seriousness of his present situation. While Ellen initially displayed emotional flatness, Gavin teetered on the edge of joviality.

The interrogation followed the Reed Technique, a well-known method. The first step, isolation, had been employed for an extended period. The second step, maximization, aimed to heighten the pressure on the suspect. While the Reed Technique recommends five minutes of isolation, Gavin had been isolated for hours, with only an officer closely monitoring him.

Following isolation and maximization, the Reed Method incorporates three primary categories: fact analysis, investigative interview, and interrogation. During the fact analysis step, investigators gather and analyze the facts involved in the case. They search for a motive, the potential to commit the crime, and the likelihood of committing the crime.

Once they build a good rapport with Gavin, they begin easing him into a confession. They approach the interrogation by creating the theme of Gavin's moral justification.

The moral theme adopted by the investigators was centered around the belief that if Gavin indeed murdered Aaron, he did it to protect Ellen. This theme would be carefully cultivated and developed throughout the course of the interrogation.

The investigators had pre-planned this approach, likely basing it on information obtained from various sources, including Gavin himself. They would emphasize the idea that Gavin was acting as a hero, solely motivated by the desire to safeguard Ellie. This thematic development would serve as a guiding principle for the investigators throughout the interrogation process.

Interrogation Footage (about 45 seconds)

Explanation of what was said & what is happening w/video footage - Strategy (45-50 seconds)



Russell stands out as the individual who seems to have been least affected by the situation. In contrast, Gavin's behavior has undergone a noticeable transformation, shifting from casual politeness to a state of distress. Likewise, Ellen's demeanor has changed from being flat and indifferent to one of anger. Russell, on the other hand, remains consistently lighthearted and optimistic, exhibiting eccentric conduct that is influenced by a range of psychological factors.



A short conversation with Kamie, a family friend, reveals that Russell suffers from Autism. In the interrogation footage, you can see Russell ramble on about different individuals named Aaron in his life. The investigation officer lets him do this. It's a popular technique to let suspects talk. The more they talk, the more comfortable they're likely to feel— and the more likely they are to say something incriminating.

Russell has mentioned before that he has been diagnosed with Autism, indicating that he falls under the neurodiverse spectrum. As someone with Autism, Russell may face challenges in certain areas of communication.

Despite this, he generally demonstrates strong social skills. However, in this particular situation, he tends to engage in circumstantial speech. The presence of individuals named Aaron, who are not directly relevant to the ongoing conversation, further reinforces observations that support Russell's diagnosis, as well as other diagnoses that may arise during the interrogation.



In an effort to make Russell more comfortable and establish rapport, investigators offer him a drink and allow him to step outside for a cigarette. These actions are intended to put him at ease and gain favor with him. This approach is sometimes used as an incentive to elicit confessions, with the promise that the person can smoke after sharing relevant information. It's important to note that individuals being interrogated may not be under arrest yet and have the option to leave if they choose to.

They cannot be compelled to speak, and the police aim to create an environment that discourages their desire to leave by providing food, drinks, and cigarette breaks. This approach respects due process rights. As a result, Russell proceeds to divulge everything that the investigators need to know.

Once they come back, Russell is made to sit in the interrogation room alone, where he seems to grow increasingly agitated. He begins showing signs of verbal and non-verbal aggression, referring to the cop behind the camera as "punk" and demanding the footage be destroyed once the trio is set free.

Russell's behavior takes a noticeable shift towards openly mocking law enforcement and displaying a lack of respect for authority. While his remarks may be delivered in a joking manner, there are strong negative undertones to the poem he recites.

There is a perspective that suggests Russell, perhaps unknowingly, is countering the potentially detrimental effects of the isolation element in the Reed interrogation technique. By asserting control over his own situation, regardless of the accuracy of his beliefs, Russell is likely

developing feelings of boredom. This proactive approach may contribute to a decrease in emotional or psychological distress he experiences during the process.

Although Russell's behavior may be influenced by a delusion, it is still evident that he displays histrionic tendencies, much like what we observe during Ellen's interrogation. He consistently engages in melodramatic acts, seeking attention and making exaggerated displays. The police continue to allow him to speak, providing him with ample opportunity to further incriminate himself, metaphorically giving him the rope he needs to hang himself.

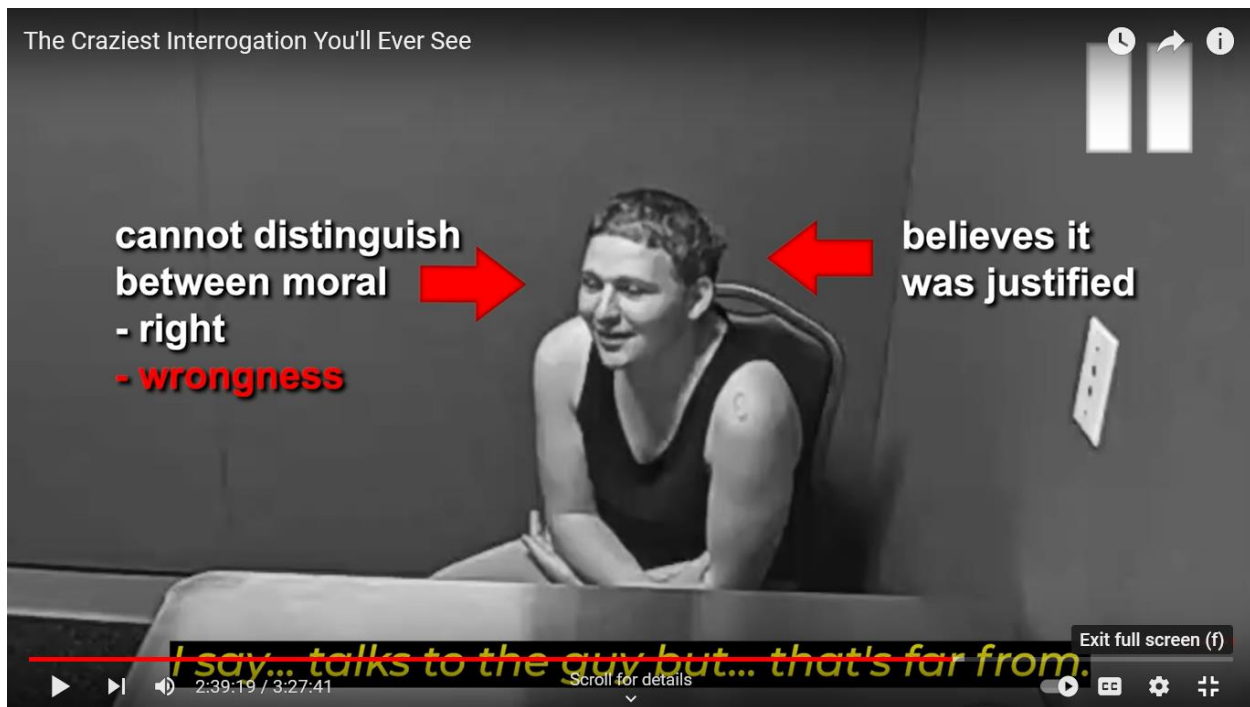
Interrogation Footage (about 1.5 minutes)

Explanation of what was said & what is happening w/video footage - Strategy (30 seconds)



The investigators come back into the room and begin conversing with Russell. The investigator ensures that it is documented that he granted Russell permission to smoke a cigarette and that he informed Russell of his Miranda rights on two occasions.

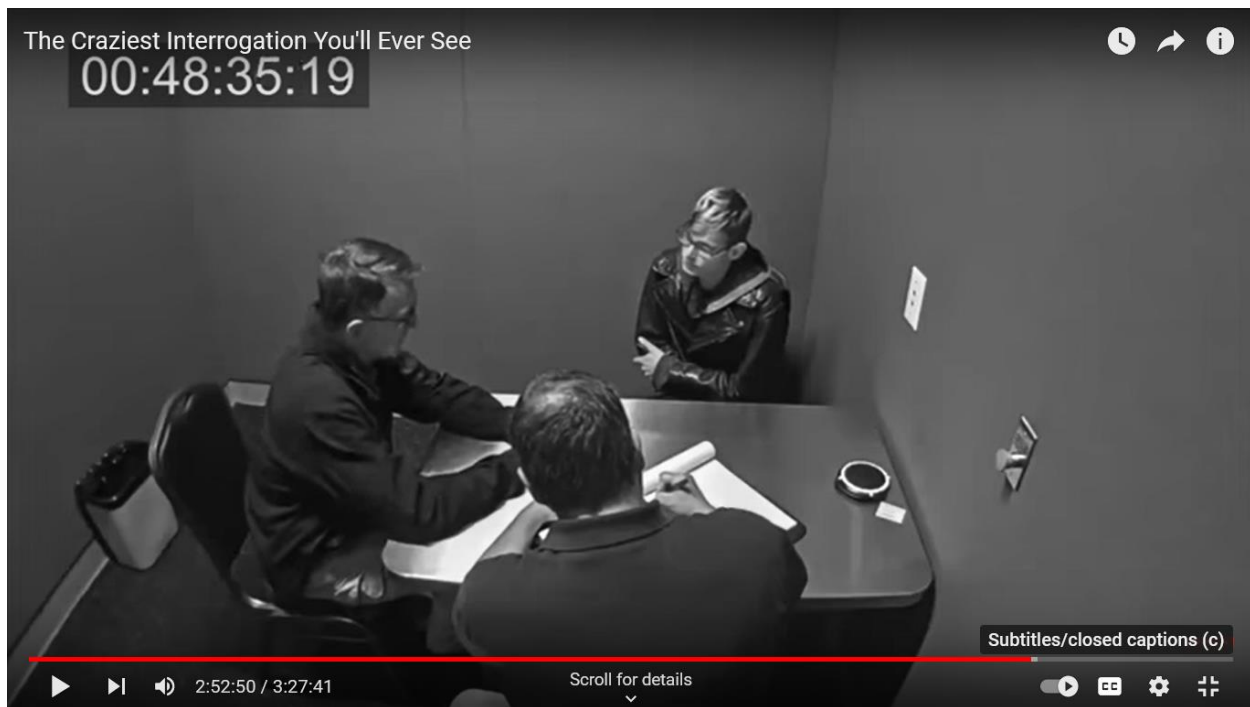
In an effort to prevent Russell from retracting his previous statements of guilt, the investigator swiftly recaps the prior testimony and the actions taken during the visit to the crime scene. It is important to note that the room is being recorded and equipped with a microphone, and the investigator took measures to ensure that it remained activated, not allowing for any interruption or turning it off earlier.



While there is a commonly held belief that individuals on the autism spectrum struggle to differentiate between moral right and wrong, the reality is quite the opposite. In fact, individuals diagnosed with Autism often exhibit a heighted sense of understanding regarding ethical distinctions. In Russell's case, he seems to hold an extreme perspective on what is morally right, believing that the actions taken against Aaron were entirely justifiable in this particular situation.

Interrogation Footage (about 7 seconds)

Explanation of what was happening - (Mug shot w/possible sentence) - 1.5 minutes



Pay attention to Gavin's nonverbal cues during this phase of the interrogation. They reveal a heightened level of distress directly related to the crime under discussion. This reaction is understandable, considering that the consequences he faces are the most severe, and his actions are also severe in nature.

When the interrogator asked Gavin if he's ever been diagnosed with a disorder, he said he was diagnosed with ADHD.

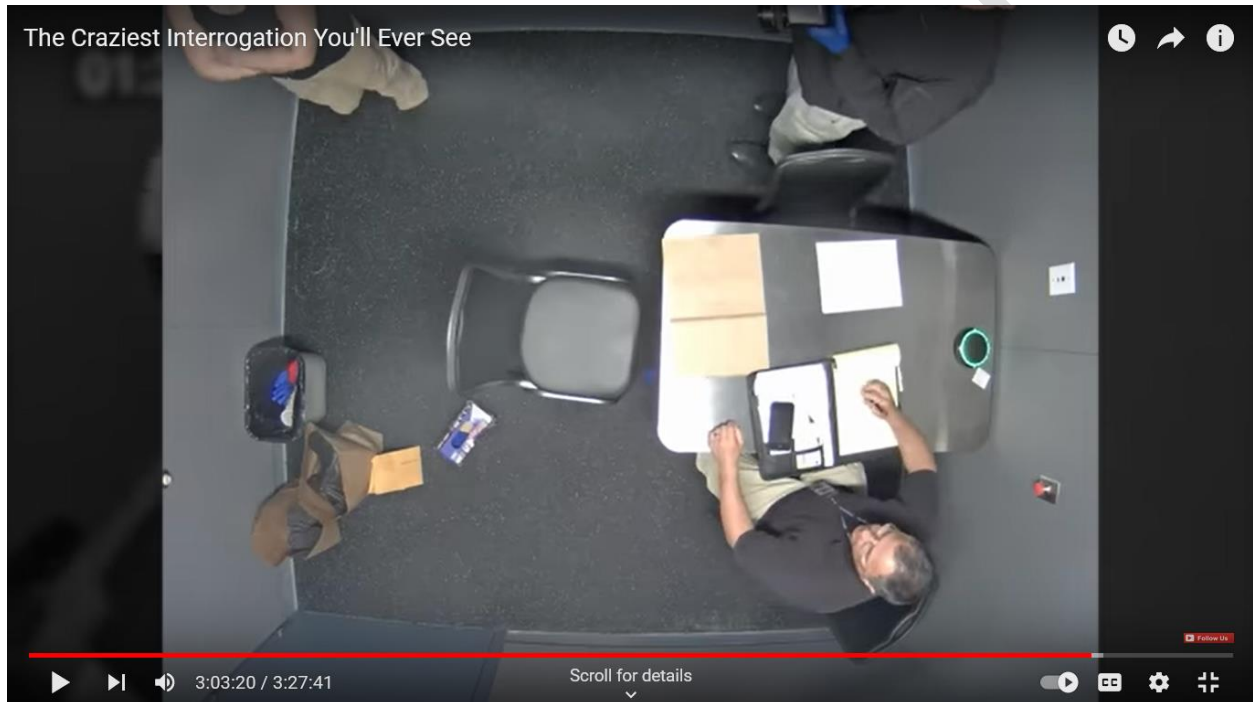
The aspects we have discussed regarding Russell also have the potential to be applicable, to some extent, to Gavin. Like Russell, Gavin may face difficulties in fully comprehending the true magnitude of his actions, even though he recognizes that the outcome is unfavorable at this stage of the interrogation.

Gavin's reported disorders, along with his struggle, could have significantly influenced the way this crime unfolded. An anonymous acquaintance who spoke with us mentioned observing a change in Gavin's behavior, coinciding with the time when Gavin claims to have stopped taking his ADHD medication. This suggests a possible connection between Gavin's altered state and the impact it had on his actions during the crime.

Gavin recalls the moment Ellen hands him the bat to go inside and kill her father. Despite the calculated nature of his actions, it is possible that Gavin experienced genuine fear at that moment. The fear of potential consequences, if Aaron were to wake up may have compelled Gavin to take action, even though he may not have intended to follow through with it initially.

As we previously discussed, the fight-or-flight response can manifest in different ways. In the Investigators' account of Gavin, they describe freezing. It is important to note that freezing is also a possible response within the fight-or-flight mechanism. In Gavin's case, the freeze response may have shifted to fight once he found himself in closer proximity to Aaron.

Gavin expresses remorse, but interestingly, not for taking Aaron's life. Instead, he implies that his actions were driven by Ellen's influence. While Gavin's family claims that Ellen played a major role in manipulating Gavin, there are differing opinions on this matter from other sources.



In the other interrogation room, Russell is being asked when was the last time he slept. It was three days ago.

It is commonly observed that individuals with bipolar disorder face difficulties sleeping during manic episodes. This observation strongly indicates that Russell is currently experiencing a manic episode, which aligns with his reported delusions.

[A 3-way split screen of the trio being handcuffed and fingerprinted]

Conclusion 10 seconds

As the investigation unfolds, the three individuals involved in the case, Gavin, Ellen, and Russell, are seen being escorted for fingerprinting and processing. The gravity of the situation is evident as they face charges for the alleged murder of Ellen's father.

The legal process now commences as law enforcement strives to gather evidence and ensure that justice is served. The story of this true crime continues to captivate, leaving us with lingering questions about the motives and circumstances surrounding this tragic event.

CONFIDENTIAL